



12Planet IM for Symbian

User Manual

Document Version 1.1

Table of Content

1	Introduction	3
2	Installation.....	4
3	User Instructions	5
3.1	Login process	5
3.2	Chat with someone	7
3.3	Insert emoticons	7
3.4	Multiple users chat session.....	9
3.5	Privacy control	9
3.6	Look & feel, skin support	10
3.7	Multilingual user interface.....	13

1 Introduction

12Planet (pronounce “one to planet”) is a software company specialized in Enterprise Instant Communication solutions, its professional server software has been deployed by over 400 customers in more than 20 countries worldwide.

12Planet IM for Symbian is an instant messaging client software that has been developed to work on the SonyEricsson P800 Symbian operating system.

This client software works with both 12Planet Instant Messaging Server solutions and the public Microsoft™ MSN instant messaging network if appropriate network connections are authorized on the user's wireless carrier level.

This documentation explains how to use the software with the public MSN™ network instant messaging services (similar to what is proposed on SmartPhones)

Prior to test the software, you need to create at least one account on the MSN™ network (contact support@12planet.com on how to get a private instant messaging server software), for example a .NET passport or a hotmail account (<http://messenger.msn.com>).

In this document, we suppose we have 2 user accounts:

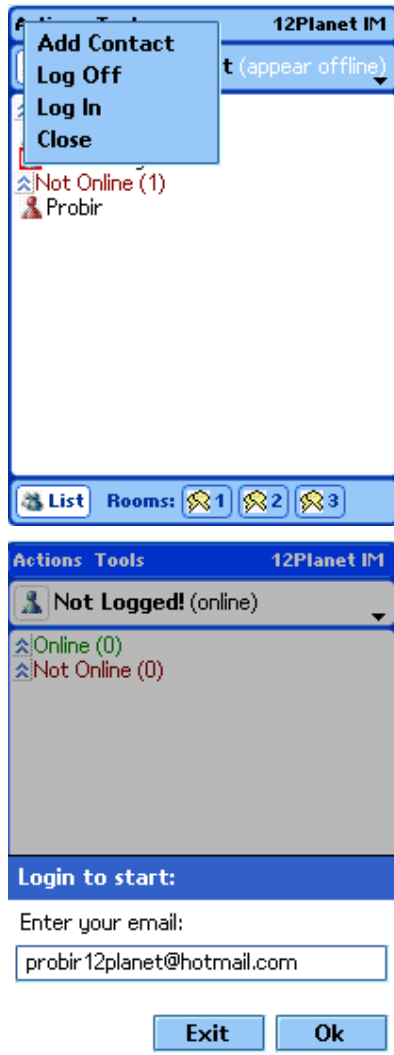
Probir12planet@hotmail.com and seb@12planet.com

2 Installation

Please follow your telephone's instructions on how to install a software on the mobile phone.

3 User Instructions

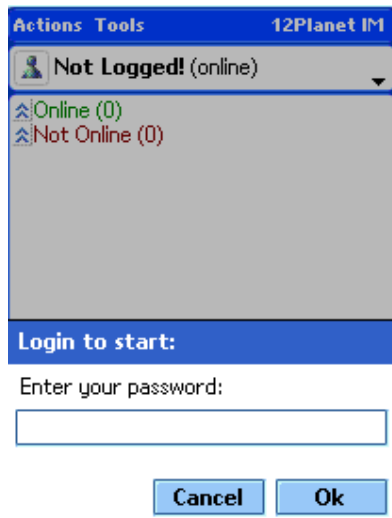
3.1 Login process



Click on *12PlanetIM* to launch the application.

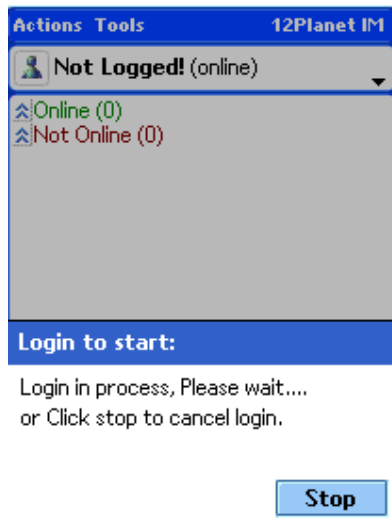
To connect to the Instant Messaging server, first click on actions menu and select “*Log In*”

The first step is to enter your .NET account login info (email address) in the entry box and click on the OK button.

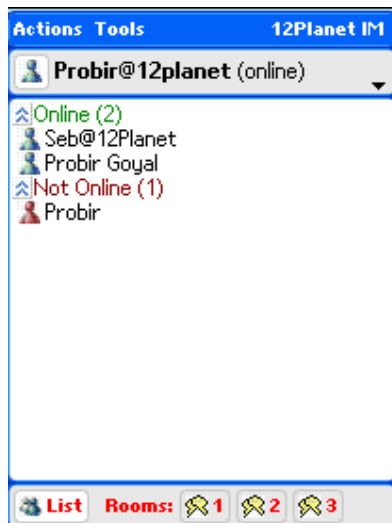


The second step is to enter your password for this account. Be careful your password is not obfuscated, so make sure nobody can observe what you are typing. This will be modified in the next release.

Click on the Ok button to logon.



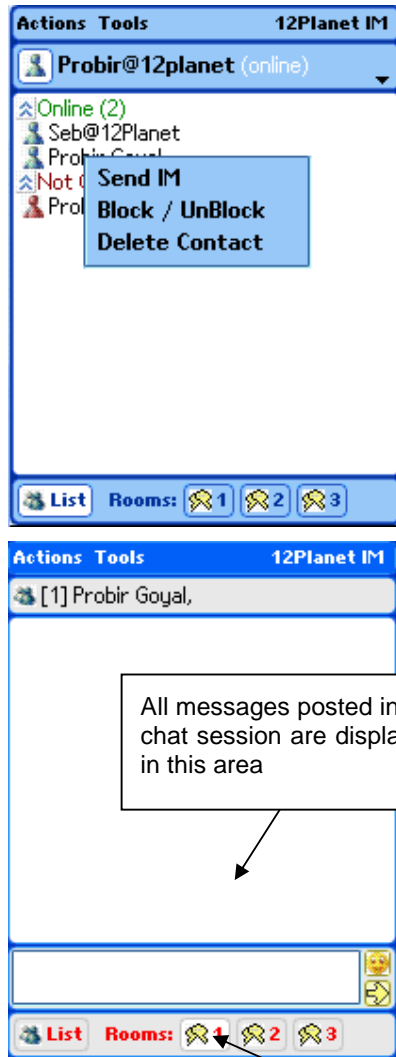
The login procedure requires authentication between the IM client software and the IM server located on a public or private server. The IM client also retrieves your buddy list and their status info. Depending on the speed of your wireless network or the server load, this process may take up one minute. Please be patient and wait until the login popup disappears.



Great! You are now connected to MSN public server, and you can now see from anywhere whether your contact are online, as if you were in front of your office/home desktop computer messenger software !

Click on your login name under the “Actions Tools” menu to set the presence information you want to show to your buddies (online, offline, busy..)

3.2 Chat with someone



To see the available actions you can do on a contact, first select his name using the stylus, which will open a contextual menu.

You can

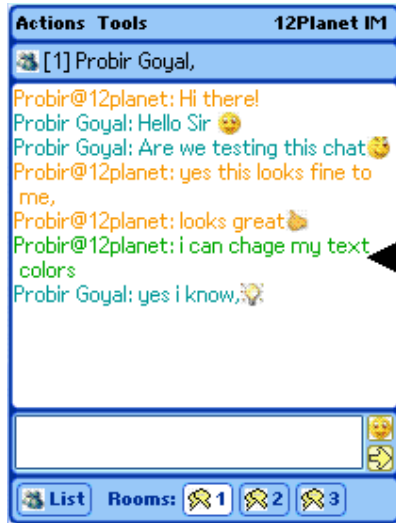
- Start a chat session with him
- Block or unblock the contact so he can or cannot see your online status.
- Delete the contact

Tap on “Send IM” menu item on the previous screen, a new window opens up as a chat space between you and the selected contact. During a chat conversation you can:

- Send messages including emoticons
- Invite someone else to participate to the chat
- Close the chat session
- Switch between all open chat sessions and the buddy list view

3.3 Insert emoticons

To know which window is displayed, look for the highlighted icons in the taskbar. Here the active window is the chat room 1



To add an emoticon to your message, tap on the happy face 😊 on the right side of the text entry field. A popup



shows up and you can select one icon to insert it into your message.

Another way is to use text shortcuts.

Tips: to memorize which shortcut is behind an icon, tap on the happy face, select the icon you want to insert, look at the message entry field, the icon is displayed there in the text shortcut view. For example for the happy face use the sequence :)

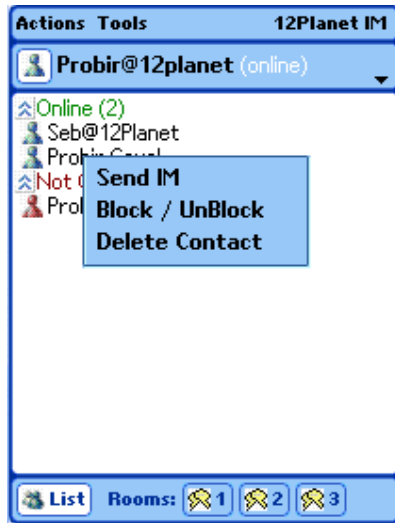
3.4 Multiple users chat session



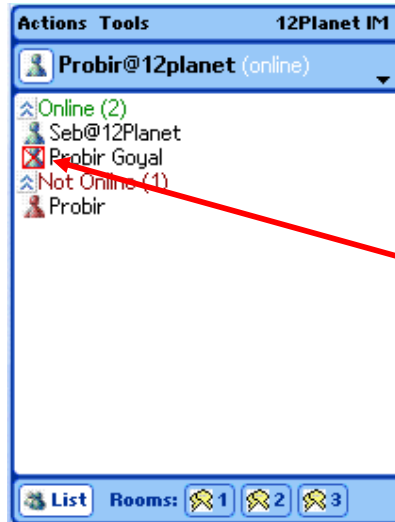
To invite someone joining a chat session, click on *Actions* menu and select item *Invite Someone*

Suppose that *Seb@12planet.com* has been invited into the conversation, each of the 3 users can now send and receive messages in this chat session.

3.5 Privacy control

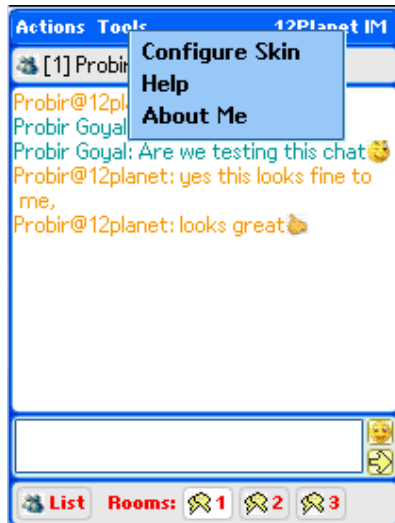


To prevent a contact to see your online/offline status, you have to block him. Select your contact in the contact list, and use *Block / Unblock* item to block or unblock the contact.

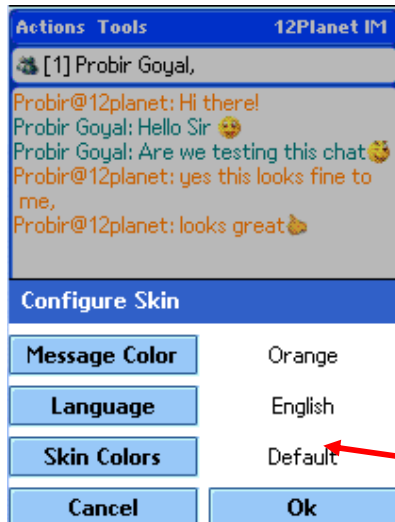


When the contact is blocked, its icon is changed to a red crossed one to indicate he will always see you as offline (red colored icon) and cannot initiate chat sessions with you.

3.6 Look & feel, skin support

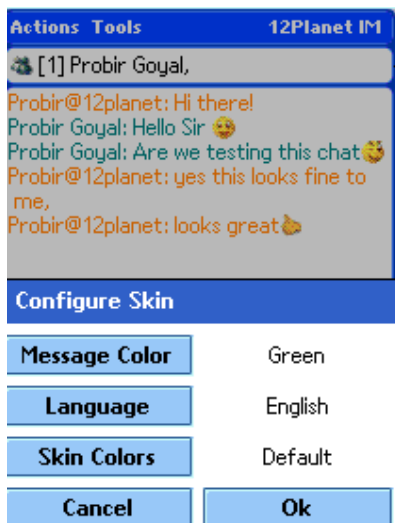


If you want to change the look and feel of the 12Planet Symbian IM client, or change the color of the messages you post, click on the *Tools* menu, and select the “*Configure Skin*” menu item



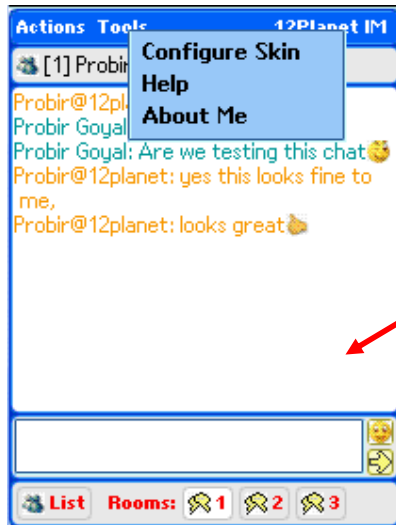
If you want to change your message color, click on *Message Color* button to select a different color.

In this example we want to change our message color from orange to green



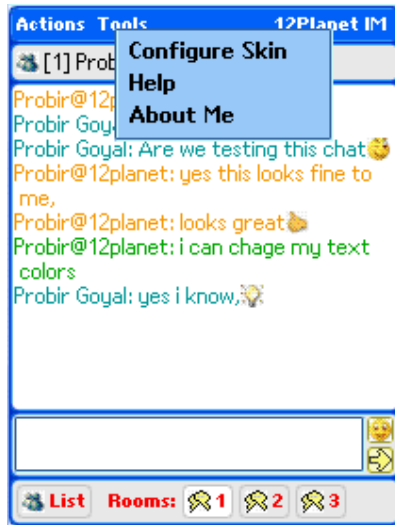
Now the new color is set to green. New messages you will post to the chat session will appear in green, for you and for all the participants.

You can also change the global look of your application using *Skin Colors* options



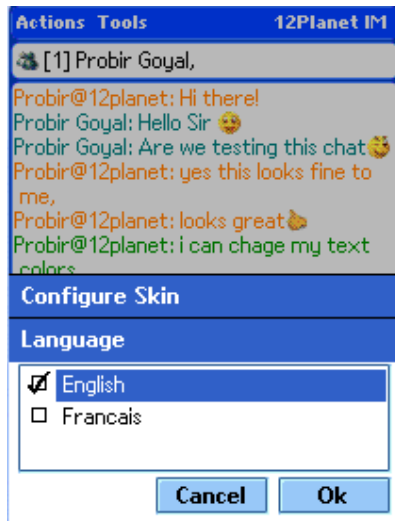
Now the new message posted by [Probir@12planet](#) is displayed in green

3.7 Multilingual user interface



12Planet Symbian Instant Messaging solution is multilingual. The user interface can be easily converted to many languages. In this version only two languages have been activated (English and French)

To change the language used for the user interface, Select “Configure Skin” in Tools menu, then click on the “Language” button



Select the language to use (here we use English) and apply the change using the Ok button